



# MindManager<sup>®</sup> Pro X5

The Visual Tool for Brainstorming and Planning

Developed  
for Windows<sup>®</sup>  
2000 & XP

MindManager X5 Pro helps business professionals get more done in less time. As the digital alternative to whiteboards, flip charts and notepads, MindManager is a highly efficient tool for managing ideas and information. Maximize performance through more effective meetings, increased project success rates, and accelerated decisions.

#### System Requirements:

- Windows NT<sup>®</sup> 4.0 SP6 / 2000 / XP Professional or Home
- Pentium 233 Mhz or higher
- 128 MB RAM or greater
- 150 MB disk space
- 800x600 resolution or higher, 16-bit / 65K colors or higher
- Microsoft Office 2000 / XP / 2003

#### For optimum use:

- Microsoft Project 2000 / 2002
- Internet Explorer 5.5 or later
- 256 MB RAM or greater

#### Languages:

- English
- German

#### Mindjet LLC

125 E. Sir Francis Drake  
Fourth Floor  
Larkspur, CA 94939 USA  
Phone: +1 (415) 925-3120  
Fax: +1 (415) 925-3110  
Toll Free: 1-877-MINDJET (646-3538)  
Web site: [www.mindjet.com](http://www.mindjet.com)  
Email: [sales@mindjet.com](mailto:sales@mindjet.com)

**Microsoft**  
CERTIFIED  
Partner

#### • Brainstorming Sessions

Quickly capture, develop, and communicate information in a clear, visual format

#### • Project Planning

Focus the brainstorming and planning phases of a project for faster implementation

#### • Meeting Organization

Get everyone on the same page and make faster decisions

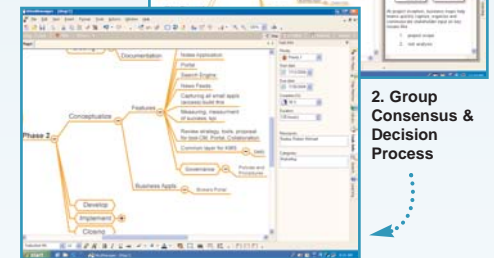


1. Meeting

### Time Savings and Productivity Benefits

MindManager is a proven tool for increasing individual and team productivity.

1. Build a meeting agenda map, attaching pertinent documents and information needed for discussion.
2. Project the map onto a wall, capturing and organizing information in real-time.



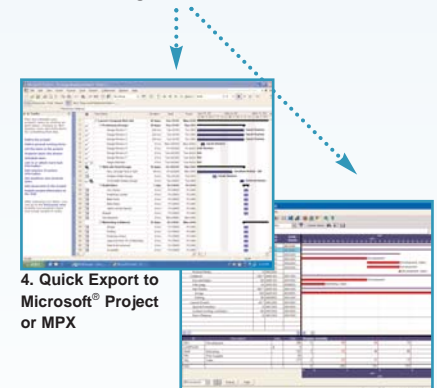
2. Group Consensus & Decision Process

3. Task Planning & Resource Allocation

### "Eliminate 2 out of every 3 meetings"

Source: DFS Case Study

3. Assign tasks and resources to the map, quickly bringing ideas into action.
4. Distribute meeting results instantly in a variety of formats, including PDF, Web pages, Word, and PowerPoint<sup>®</sup>.



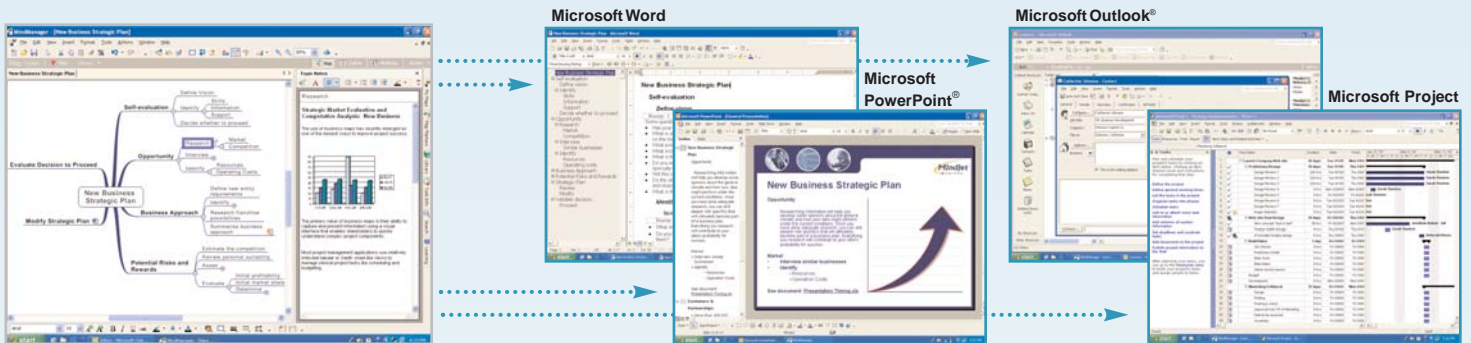
4. Quick Export to Microsoft<sup>®</sup> Project or MPX

### "Move projects from brainstorming and planning into implementation 20% faster."

Source: Mindjet User Survey, Fall 2002

## Seamless Integration & Publishing

X5 Pro seamlessly integrates with Microsoft® Office and an extensive variety of formats to increase productivity and jump-start business projects.



## Harness Corporate Knowledge

MindManager X5 Pro is based on XML technology to integrate seamlessly with Microsoft Office and Enterprise data sets. Teams can work smarter by customizing research and meeting maps with information from third-party data sources including:

- Search results
- News feeds
- Proprietary databases\*
- CRM & ERP systems\*

\*Object Model allows development of custom functionality using a built-in Macro Script Editor.

**MindManager X5 Pro contains all the features and functionality of the X5 edition, plus powerful features to help professionals accomplish more in less time.**

Features	Benefits	X5	X5 Pro
<b>Seamless Integration</b>			
Microsoft Word	Plan and organize large complex documents, then export to Word, or import docs into maps	✓	✓
Microsoft PowerPoint	Develop better presentations in less time. Capture ideas, develop content, export to PPT	✓	✓
Microsoft Project	Brainstorm project components, assign tasks and resources, then export to Project		✓
Microsoft Outlook	Integrate with Outlook Email, Contacts, Calendar, Tasks, Notes and Folders		✓
<b>Publishing</b>			
Save As Web Pages	Instantly convert map content into professional Web pages for publishing	✓	✓
Bitmap Export	Export maps or selected Topics in bitmap format, then paste into other programs	✓	✓
PDF Export	Publish maps to PDF format for platform independent distribution		✓
MPX Import/Export	Compatible with MPX file format for integration with leading Project Management tools		✓
<b>Productivity Features</b>			
Execute Commands	Execute commands on multiple maps, including Save as Web pages and Search		✓
Printing	Flexible map structure allows users to print maps individually or as a group		✓
Review Mode	Team feature allows multiple users to add comments, providing context to Topic history		✓
Wizard Framework	Develop and standardize processes via customizable wizards and templates		✓
<b>Customization</b>			
XML Transformations	Use industry standard XSLT scripts for input/output and content conversion		✓
Macro Editor	Create and edit add-in scripts to develop custom functionality		✓
Data Interchange	Customize maps by integrating Enterprise data sets and Web services		✓
SmartMapX Technology™	Ability to create custom Map Parts and productivity solutions		✓